

DEPARTMENT 16 - CAVIES

Superintendent - Tami Herman

Show Secretary - Dawn Guth

Judging - 9:00 a.m. Tuesday

ENTRY FEE: \$1.00 per animal Open Class

CHECK IN: Monday from 11:00 a.m. - 8:00 p.m.

CHECK OUT: Sunday from 6:00 p.m. - 7:00 p.m. or forfeit your premium

THIS IS AN ARBA SANCTIONED SHOW AND WILL BE CONDUCTED UNDER THE LATEST ARBA SHOW RULES. CLUB SANCTIONS WILL BE ACCEPTED IF DONATED. CONTACT SUPERINTENDENT.

Cavies are limited to a maximum of 12 cavies per exhibitors with a maximum total number of 64. No animals permitted in the building except those entered into open class or 4-H exhibit.

All cavies MUST be tagged or permanently tattooed in the left ear prior to fair. All tags or tattoos must match the tag or tattoo on the entry form. Substitutions will only be permitted at check in. NO CHANGES will be allowed at the show table.

Exhibitors may advertise their animals for sale after the Open show has been completed. Animals that were disqualified, given an 'Unworthy of an Award' or excused for vicious behavior during the Open show may not be sold by the owner. Animals showing any signs of disease may not be sold and must be removed from the barn.

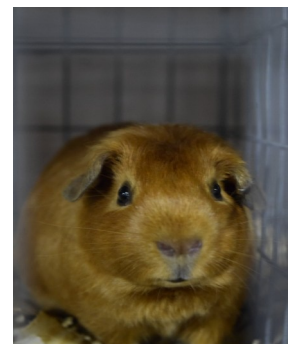
Exhibitors must provide their own feed. Individual cages must be cleaned every other day or by discretion of the superintendent. Exhibitors will be responsible for cleaning and feeding their exhibits. All cavies are the responsibility of the exhibitor. After a cavy is sold, you may re-coop for a fee of \$2.00 per cavy. You may acquire the proper re-couping paperwork from the Show Superintendent during fair.

SECTIONS: Breeds (any breed not listed can be added by contracting the fair office)

- | | | |
|--------------------|----------------------|-------------------|
| 1. Silkie | 2. Peruvian | 3. Coronet |
| 4. White Crested | 5. American | 6. Abyssinian |
| 7. Teddy | 8. Silkie Satin | 9. Peruvian Satin |
| 10. American Satin | 11. Abyssinian Satin | 12. Teddy Satin |
| 13. Texel | | |

CLASS:

1. Sr. Boars—Males 32 oz. or over 6 months old
2. Sr. Sows—Females 32 oz. or over 6 months old
3. Inter. Boars—Males 22-32 oz., up to 6 months of age
4. Inter. Sows-Females 22-32 oz., up to 6 months of age
5. Jr. Boars—Males minimum 12 oz or maximum 22 oz
6. Jr. Sows-Females minimum 12 oz or maximum 22 oz



DEPARTMENT 16 - CAVIES

Superintendent - Tami Herman

Show Secretary - Dawn Guth

Judging - 9:00 a.m. Tuesday

ENTRY FEE: \$1.00 per animal Open Class

CHECK IN: Monday from 11:00 a.m. - 8:00 p.m.

CHECK OUT: Sunday from 6:00 p.m. - 7:00 p.m. or forfeit your premium

PAYBACK SCHEDULE

1 in class 2.00

2 in class 2.20 1.80

3 in class 2.40 2.00 1.60

4 in class 2.60 2.20 1.80 1.40

5 in class 2.80 2.40 2.00 1.60 1.20

6 in class 3.00 2.60 2.20 1.80 1.40

PREMIUMS

There will be no ribbon/rosette awards for Open Class UNLESS you request them by emailing the fair office at summitcofair2@gmail.com

SPECIAL MONEY

\$10 Best in Show, \$5 Reserve in Show

\$10 Best Display, \$7.50 Second Best Display, \$5 Third Best Display
(Display calculated on open class points only)

\$2 Best of Breed

\$1 Best Opposite Sex

\$0.50 Best of Variety, \$0.25 Best Opposite of Variety

\$1 Best Display in each breed.

